



Harkness Screens UK
 Tel +44 (0) 1438 725200
 Fax +44 (0) 1438 344400

E-Mail sales@harkness-screens.com
www.harkness-screens.com

Harkness Screens USA
 Tel +1 (540) 370 1590
 Fax +1 (540) 370 1592

**ELECTRIC ROLLER SCREEN
 B-LITE BUDGET 6
 PRODUCT DATA SHEET**

Document Ref DS-057 Issue 4 Oct 2007

The B-Lite Budget 6 is a cost effective electrically operated roller screen for wall, ceiling or specialised mounting. Solidly constructed and quiet during operation, the B-Lite Budget 6 meets financial constraints without compromising quality or performance.

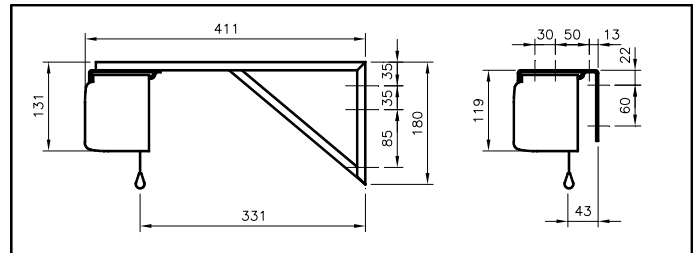
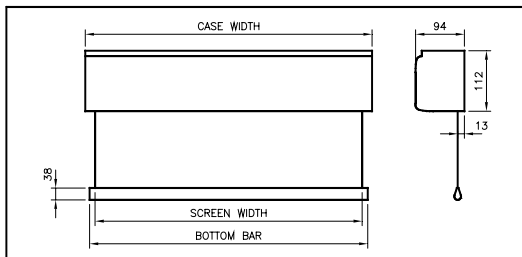
Application

Typical applications include:

- Training and lecture rooms
- Schools and colleges
- Leisure and entertainment venues – particularly public houses and clubs

GENERAL DIMENSIONS – NOT TO SCALE

All dimensions are in mm



FIXING BRACKETS ARE SUPPLIED

| | |
|-----------------|------------------|
| Stock Code | B-LITE B6 |
| Screen Width | 180cm (6.00ft) |
| Screen Height | 180cm (6.00ft) |
| Case | 196cm (77ins) |
| Screen weight | 186cm (73ins) |
| Weight (Approx) | 16kg (35lb) |

General Detail

| | |
|-----------------------|--|
| Construction | Aluminium case. Epoxy powder coated white (RAL 9010 – 75% gloss) Self-lubricating motor with integral capacitor, gearbox and limit switches Ø70mm (2.75") aluminium tube screen roller mounted on two vibration and noise absorbing supports |
| Mounting | Ceiling – bracket or suspended Wall - bracket Pipe / fly bar supports |
| Screen Surface | Size 180cm x 180cm (6' 0" x 6' 0") Unmasked Matt White – gain 1.0 Optional rear projection Flame retardant classification M1 7201-96 |
| Picture Size | Surface size is picture size |
| Operating | Mains cable (right-hand side entry) when viewed from the front Power supply : 230V 50hZ Standard rating : 3 amps Control station: three position up/down/stop, wall mounted |
| Accessories | False ceiling mounting kit – consisting of 2 x screen case brackets and 4 x 1 metre suspension rods; trim kit available. Custom painted borders available. |
| NOTE: | Comprehensive installation instructions accompany screen. Electrical connections should be completed by an appropriately qualified person. |

In the interest of product enhancement, Harkness Screens reserves the right to introduce modifications or alterations without notice