



Harkness Screens UK
 Tel +44 (0) 1438 725200
 Fax +44 (0) 1438 344400

E-Mail sales@harkness-screens.com
 www.harkness-screens.com

Harkness Screens USA
 Tel +1 (540) 370 1590
 Fax +1 (540) 370 1592

**ELECTRIC ROLLER SCREEN
 MAJOR PRO C
 PRODUCT DATA SHEET**

Document Ref DS-056 Issue 5 Oct 2008

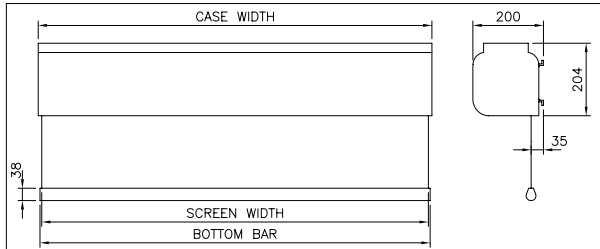
The Major Pro C is an electrically operated roller screen, incorporating a specially designed motor inside the roller to provide smooth, reliable and virtually silent operation for wall, ceiling or specialised mounting.

Application

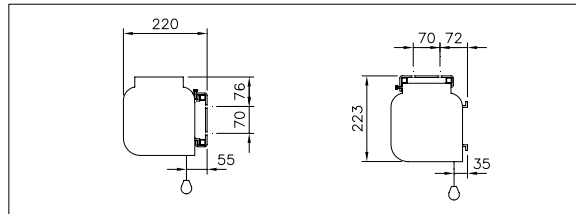
Typical applications include:

- Conference centres
- Presentation suites
- Boardrooms
- Lecture theatres
- Educational establishments

All dimensions are in mm



View of Roller Screen



Typical Mounting Brackets

Stock Code	MAJPC 500/375	MAJPC 600/450	MAJPC 700/525
Viewing Area (w x h)	500 x 375cm (16.25 x 12.25ft)	600 x 450cm (19.5 x 14.6ft)	700 x 525cm (22.75 x 17ft)
Screen Width	500cm (16.25ft)	600cm (19.5ft)	700cm (22.75ft)
Screen Height	375cm (12.25ft)	450cm (14.6ft)	525cm (17ft)
Case	520cm (205ins)	620cm (244ins)	720 (284ins)
Bottom bar	516cm (203ins)	616cm (242ins)	716cm (281ins)
Weight (Approx)	95kg (209lb)	114kg (251lb)	133kg (293lb)

Screens will have horizontal seams

General Detail

Construction

Heavy gauge aluminium housing. Epoxy powder coated white ((RAL 9010 – 75% gloss).
 Self-lubricating motor in roller, automatic thermal overload cutout, integral capacitor, gearbox and limit switches.
 Ø152mm (6") aluminium tube screen roller mounted on two vibration and noise absorbing supports.

Mounting

Ceiling – bracket or suspended
 Wall - bracket
 Pipe / fly bar supports

Screen Surface

Maximum size 7000mm (22' 9") x 5250mm (17' 0")
 Three standard sizes available – intermediate sizes to special order
 Matt White – gain 1.0
 Flame retardant classification M1 7201-96

Picture Size

Surface size is picture size

Operating

Mains cable (right-hand side entry) when viewed from the front
 Power supply : 230V 50hZ
 Standard rating : 3 amps
 Consumption : 240W
 Speed : 12rpm – 94mm/3.7" per sec.
 Control station: up/down, wall mounted

Special Options

Black masking – 50mm (2") sides (except 7m units when surface size is less black border width).
 Rear projection option.

Accessories

Remote/radio control – stock code RRC (screen modifications required).
 Low voltage interface (LVI) 12v constant from mini-phono plug on projector.

NOTE:

Comprehensive installation instructions accompany screen.
 Electrical connections should be completed by an appropriately qualified person.

In the interest of product enhancement, Harkness Screens reserves the right to introduce modifications or alterations without notice