



**Harkness Screens UK**  
Tel +44 (0) 1438 725200  
Fax +44 (0) 1438 344400

E-Mail sales@harkness-screens.com  
www.harkness-screens.com

**Harkness Screens USA**  
Tel +1 (540) 370 1590  
Fax +1 (540) 370 1592

**ELECTRIC ROLLER SCREEN  
PRO-VIEW  
PRODUCT DATA SHEET**

Document Ref DS-054 Issue 3 Oct 2007

The Pro-View is an electrically operated roller screen, incorporating a specially designed motor to provide smooth, reliable and virtually silent operation for wall, ceiling or specialised mounting.

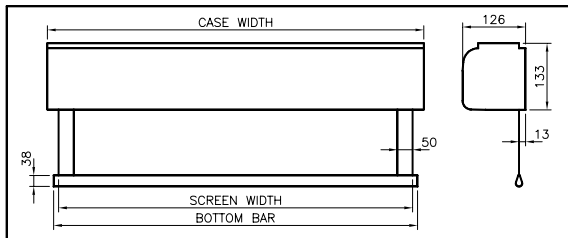
**Application**

Typical applications include:

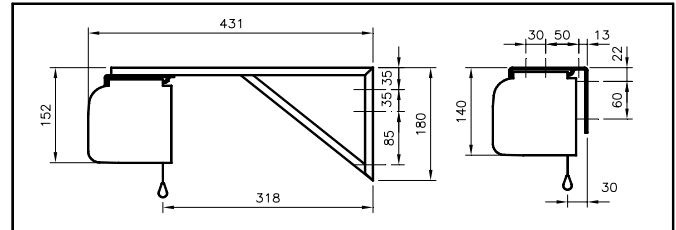
- Conference centres
- Presentation suites
- Boardrooms
- Lecture theatres
- Educational establishments

**General Dimensions – not to scale**

All dimensions are in mm



View of Roller Screen



Typical Mounting Brackets

Stock Code	PRO 6/6	PRO 7/7	PRO 8/6	PRO 8/8	PRO 9/9	PRO 10/8	PRO 10/10	PRO 12/9	PRO 12/12
Viewing Area (w x h)	183x183cm (6' x 6')	213x213 cm (7' x 7')	244 x 183cm (8' x 6')	244x244cm (8' x 8')	274x274cm (9' x 9')	305x244cm (10' x 8')	305x305cm (10' x 10')	365x274cm (12' x 9')	365x365cm (12' x 12')
Screen Width*	193cm (6.3ft)	223cm (7.3ft)	254cm (8.3ft)	244cm (8.3ft)	284cm (9.3ft)	315cm (10.3ft)	315cm (10.3ft)	375cm (12.3ft)	375cm (12.3ft)
Screen Height	183cm (6ft)	213cm (7ft)	183cm (6ft)	244cm (8ft)	274cm (9ft)	244cm (8ft)	305cm (10ft)	274cm (9ft)	365cm (12ft)
Case	202cm (79.5ins)	232cm (91ins)	263cm (103.5ins)	263cm (103.5ins)	293cm (115ins)	324cm (127.5ins)	324cm (127.5ins)	384cm (151ins)	384cm (151ins)
Bottom bar	196cm (77.2ins)	229cm (90.2ins)	260cm (102.4ins)	260cm (102.4ins)	290cm (114.2ins)	321cm (126.4ins)	321cm (126.4ins)	381cm (150ins)	381cm (150ins)
Weight (Approx)	16kg (35.2lb)	18kg (39.6lb)	19kg (41.8lb)	20kg (44lb)	22kg (48.4lb)	26kg (57.2lb)	27kg (59.4lb)	27kg (59.4lb)	30kg (66lb)

\*SCREEN WIDTH is PICTURE WIDTH plus black edge masking of 50mm (2") both sides. Horizontal seam required when screen height dimension exceeds 244cm (8ft)

**General Detail**

**Construction**

Heavy gauge aluminium case. Epoxy powder coated white ((RAL 9010 – 75% gloss).  
Self-lubricating motor with thermal cutout, integral capacitor, gearbox and limit switches.  
Ø90mm (3.5") aluminium tube screen roller mounted on two vibration and noise absorbing supports.

**Mounting**

Ceiling – bracket or suspended  
Wall - bracket  
Pipe / fly bar supports

**Screen Surface**

Maximum size 3750mm (12' 4") x 3700mm (12' 2")  
Matt White – gain 1.0  
Black edge masking (50mm sides and bottom)  
Flame retardant classification M1 7201-96

**Surface Size**

Viewing area plus black masking borders

**Operating**

Mains cable (right-hand side entry) when viewed from the front  
Power supply : 230V 50Hz  
Standard rating : 3 amps  
Consumption : 90W  
Speed : 17rpm – 80mm/3.15" per sec.  
Control station: up/down, wall mounted

**Accessories**

Remote/radio control – stock code RRC (screen modifications required).  
Low voltage interface (LVI) 12v constant from mini-phono plug on projector.  
False ceiling mounting kit – consisting of 2 x screen case brackets and 4 x 1 metre suspension rods;; trim kit up to 10' x 10' (305cm x 305cm).

**NOTE:**

Comprehensive installation instructions accompany screen.  
Electrical connections should be completed by an appropriately qualified person.

In the interest of product enhancement, Harkness Screens reserves the right to introduce modifications or alterations without notice